

Eko-Oze-PV controller with SELFA heating elements

Intelligent water heating



Economical hot water heating

Maximum utilization of current microinstallation photovoltaic production thanks to smooth power regulation



Increased self-consumption

Energy is sent to the grid only after the water in the domestic hot water tank (DHW) is heated



Prevents inverter shutdowns

Monitors grid voltage levels and activates heating whenever there is a voltage exceedance



LAVA mobile APP

A clear and easy-to-use application for managing the device's operation

SELFA Warranty



2 YEARS POLISH WARRANTY
ON THE PRODUCT



TESTED IN THE RESEARCH
AND DEVELOPMENT CENTER
SELFA GE S.A.

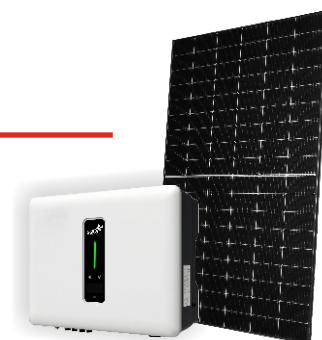


Table of types of heating elements with control

MODEL	Power [kW]	Voltage [V]	Immersion Length [mm]	Head Size [inches]	Min. Tank Volume [dm ³]
44.130.X*	3,0	3 ~ 230 V	270 (+/-10mm)	1 ½"	80
44.145.X*	4,5	3 ~ 230 V	350 (+/-10mm)	1 ½"	100
44.160.X*	6,0	3 ~ 230 V	460 (+/-10mm)	1 ½"	100
44.190.X*	9,0	3 ~ 230 V	680 (+/-15mm)	1 ½"	250
44.430.X*	3,0	3 ~ 230 V	270 (+/-10mm)	1 ½"	80
44.445.X*	4,5	3 ~ 230 V	350 (+/-10mm)	1 ½"	100
44.460.X*	6,0	3 ~ 230 V	460 (+/-10mm)	1 ½"	100
44.490.X*	9,0	3 ~ 230 V	680 (+/-15mm)	1 ½"	250
50.157.X*	1,5	230 V	max. 305	1 ¼" / 1 ½"	60
50.207.X*	2,0	230 V	max. 305	1 ¼" / 1 ½"	90
50.307.X*	3,0	230 V	max. 360	1 ¼" / 1 ½"	120

* Heating elements are manufactured in several versions depending on the material used: Cu, Cu/Ni, stainless steel AISI 316L / Incoloy 825.
 A detailed list of heating element types is available at www.selfa.pl

Technical Specifications of the Eko-Oze-PV Controller

eko-oze-pv (control and measurement device)	
Nominal voltage	~230/400V ~ 50/60Hz
Voltage tolerance	- 20% to 15 %
Nominal power consumption	1,5 W
Measurement accuracy	Class 2 (±2%)
Transformer parameters	0.1 – 33.3 mA / 100 A
Operating temperature range	from -10°C to 55°C
Maximum cable cross-section	ø 2,5 mm ²
Exits	3 x styk NO (COM1, OUT1, COM2, OUT2, COM3, OUT3) • 3 x adjustable 4-20 mA (SCR1, SCR2, SCR3, +12V) • bus (1-WIRE, +3.3 V, GND) • voltage (+12 V, GND)
Assembly method	surface
Transmission	Wi-Fi 2.4 GHz 802.11 b/g/n
Libra	0,437 kg
Dimensions	202 x 150 x 57mm

scr-eko-oze-pv (actuating device)	
Operating voltage	~24 ~ 280 V AC
Control signal	4 – 20 mA DC
Maximum load	3 x 17 A
Operating temperature	-20 do +80°C
Weight	1,226 kg
Dimensions	175 x 150 x 90mm